

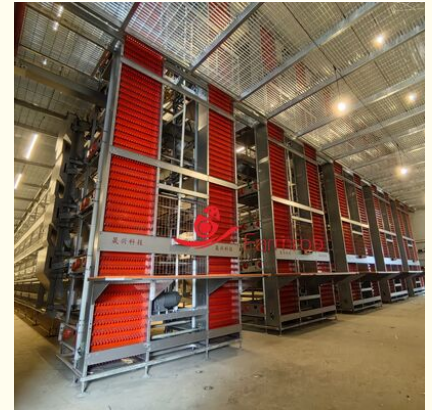


Improved Farm Poultry Battery Cage System for Commercial Laying Duck Farms

Our Product Introduction

Basic Information

- Place of Origin: Chengdu, China
- Brand Name: Farmrob
- Certification: ISO9001
- Model Number: H type automatic laying duck equipment
- Minimum Order Quantity: 200 sets
- Price: USD 65-200/set
- Packaging Details: Normal export packing 20ft / 40HQ container
- Delivery Time: 60 days
- Payment Terms: L/C,T/T
- Supply Ability: 50000 sets per month



Product Specification

- Features: Anti-corrosion, Durable, Easy To Install, Easy To Clean
- Characteristics: Automatic Drinking System, Automatic Feeding System, Automatic Egg Collection, Automatic Manure Removal System
- Service Life: Over 15 Years
- Trainings: Installation, Maintenance, Debugging
- Cage Size: 300mm *500mm *470mm(L*D*H)

for more products please visit us on farmrob.com

Product Description

Improved Farm Poultry Battery Cage System for Commercial Laying Duck Farms

Farmrob layer duck equipment is engineered to provide a superior living environment for laying ducks, effectively minimizing fatigue and stress. By prioritizing animal comfort, the system naturally promotes higher egg production rates and better flock health.

Built on a foundation of mature design principles and premium-quality craftsmanship, the Farmrob system is ideally suited for commercial duck farms operating with 3 to 8 tiers. Its flexible configuration allows farmers to maximize space utilization without compromising bird development or operational efficiency.

One of the key advantages of this equipment is its ability to significantly reduce labor dependence. With automated feeding, watering, egg collection, and manure management, farm staff can focus on strategic oversight rather than routine manual tasks. This enables more effective and precise management across the entire production cycle.

System Features

Standardized design facilitates efficient management, reduces mortality rates, and enhances overall farming profitability.

Fully automatic operation covers feeding, drinking, egg collection, manure removal, ventilation and cooling, lighting, and control systems.

Built with a solid, durable structure, it delivers exceptional stability and long-lasting functionality, making it ideal for demanding applications.

The Q235 Al-Zn alloy wire mesh features a smooth, burr-free surface to protect hens' feet and skin.

Processed in our own factory with professional laser cutting machines and bending techniques, the middle support features strong bearing capacity and excellent deformation resistance.

The feeding system evenly distributes feed to each chicken while minimizing waste. It enables real-time monitoring of feeding data.

The high-friction egg belt ensures gentle, collision-free egg transport. The egg lift is engineered for stable operation and minimal failure rates.

The manure removal system prevents belt deviation, ensuring effective waste removal.

The ventilation and cooling system precisely regulates the poultry house environment, promoting air circulation, keeping optimal humidity, and ensuring minimal temperature variation.

Support and Services

The cage rearing system is a high-quality, durable solution designed to meet the needs of poultry farmers. Our comprehensive technical support and services include:

Installation Guidance: Ensuring smooth installation and proper functionality of the system.

Regular Maintenance and Repair Services: Keeping the system in optimal working condition.

Technical Troubleshooting: Quickly resolving any issues encountered during use.

Training and Instruction: Providing training on system usage and best practices in poultry management.

We are committed to delivering exceptional customer service and support to help your poultry farming business thrive.



Sichuan Shengxing Intelligent Technology Group Co., Ltd.



+86 158 8207 1508



Johnzhu@farmrob.com



farmrob.com

19 1st Road ,YangAn Industrial Park, Chengdu City, China