

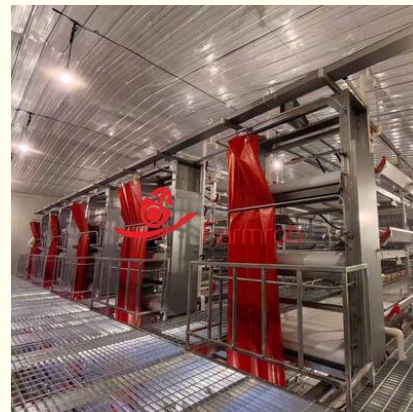


## Easily Care for Baby Chicks Poultry Battery Cage System with Scientific Design

### Our Product Introduction

#### Basic Information

- Place of Origin: Chengdu, China
- Brand Name: Farmrob
- Certification: ISO9001, CE
- Model Number: H type automatic pullet equipment
- Minimum Order Quantity: 200 sets
- Price: USD 65-200/set
- Packaging Details: Normal export packing 20ft / 40HQ container
- Delivery Time: 60 days
- Payment Terms: L/C,T/T
- Supply Ability: 50000 sets per month



#### Product Specification

- Features: Anti-corrosion, Durable, Easy To Install, Easy To Clean
- Characteristics: Automatic Drinking System, Automatic Feeding System, Automatic Ventilation And Cooling Collection, Automatic Manure Removal System
- Service Life: Over 15 Years
- Trainings: Installation, Maintenance, Debugging
- Story Height: 700 Mm
- Highlight: **poultry battery cage system for chicks, scientific design poultry cage, baby chick battery cage system**

for more products please visit us on [farmrob.com](http://farmrob.com)

## Product Description

### Easily Care for Baby Chicks Poultry Battery Cage System with Scientific Design

Our advanced poultry battery cage system is engineered for optimal care of baby chicks, featuring scientific design principles that enhance efficiency and animal welfare.

#### Automatic Pullet Battery Cage Advantages

**Durable Construction:** Middle frames constructed from Mg-Al-Zn alloy with hot-dip galvanized head and tail frames withstand harsh environments with a service period up to 15 years. Spring door design facilitates easy bird handling during transfer and vaccination.

**Efficient Feeding System:** Mg-Al-Zn alloy feed troughs (thickness: 0.95-0.98cm) with patented devices ensure even feed distribution, minimize waste, and maximize feed utilization. 45mm bottom width allows easy chick access to feed.

**Advanced Watering System:** Double water line configuration with patented nipples and cups provides reliable fresh water access while significantly reducing water loss from leakage or spillage.

**Hygienic Manure Management:** Belt-type manure removal structure with polyurethane double manure scrapers ensures thorough cleaning, improves coop hygiene, and reduces disease occurrence.

**Climate Control:** Comprehensive ventilation system maintains optimal poultry house environment, providing fresh air and proper humidity with minimal temperature variation.

#### Adjustable Feeding System

**Feeding Plate Adjusting Device:** Each tier features automatic adjustment to accommodate birds of varying ages. Patented mechanism ensures consistent front and rear movement with minimal clearance error.

**Feed Trolley:** Simple and robust design achieves low failure rate while delivering uniform feeding. Includes patented components such as chicken driver and residue collector for easy operation.

#### Adjustable Drinking System

**Water Line Regulating Linkage:** Designed to meet watering needs at different growth stages. Each water line incorporates soft connectors to prevent pipe deformation, with alloy pulling parts ensuring consistent height across the entire house.

**Front Back Flush Device:** Each water line includes backwashing capability for regular pipe and nipple drinker flushing, ensuring chickens always have access to clean water.

**Water Line Terminator:** Designed to monitor water level and pressure judgment, connected with drain pipe to prevent water leakage.

#### Support and Services

Our high-quality, durable cage rearing system is designed to meet the comprehensive needs of poultry farmers. We provide exceptional technical support and services including:

- Installation Guidance for smooth setup and proper functionality
- Regular Maintenance and Repair Services to maintain optimal performance
- Technical Troubleshooting for quick resolution of operational issues
- Training and Instruction on system usage and poultry management best practices

We are committed to delivering exceptional customer service and support to help your poultry farming business thrive.



**Sichuan Shengxing Intelligent Technology Group Co., Ltd.**



+86 158 8207 1508



Johnzhu@farmrob.com



farmrob.com

19 1st Road ,YangAn Industrial Park, ChengDu City,China