



High Resource Utilization Layer Chicken Cage System Efficient Feed and Water Distribution

Our Product Introduction

Basic Information

- Place of Origin: Chengdu, China
- Brand Name: Farmrob
- Certification: ISO9001, CE
- Model Number: H type automatic cage
- Minimum Order Quantity: 200 sets
- Price: USD 65-200/set
- Packaging Details: Normal export packing 20ft / 40HQ container
- Delivery Time: 60 days
- Payment Terms: L/C,T/T
- Supply Ability: 50000 sets per month



Product Specification

- Features: Anti-aging, Anti-corrosion
- Characteristics: Automatic Drinking System, Automatic Feeding System, Automatic Egg Collection, Automatic Manure Removal System
- Services: Technical Training, Installation Guidance
- Services Life: Over 15 Years
- Application: Poultry Farms, Egg Production Facilities, Large-scale Commercial Poultry Operations

for more products please visit us on farmrob.com

High Resource Utilization Layer Chicken Cage System Efficient Feed and Water Distribution

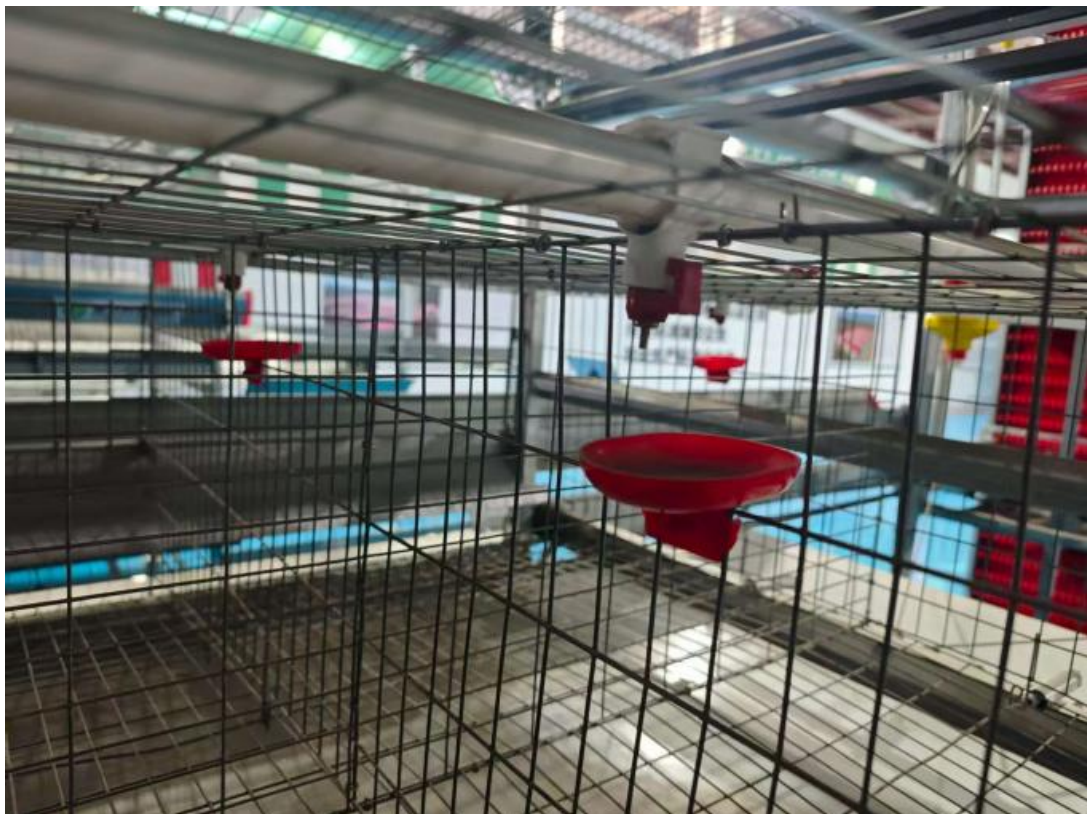
Effective management and control is essential to modern poultry farming. The combination of automatic systems for feeding, drinking, manure removal, egg collection, and environmental regulation significantly enhances operational efficiency and lowers labor requirements. Consistent access to feed and water is critical for maintaining chickens health and welfare. Farmrob's feeding and drinking systems ensure uniform and sufficient distribution of nutrients and hydration, which promotes better chicken uniformity and reduces resources waste. As a result, feed and water utilization are optimized, leading to considerable cost savings.

Drinking System

Farmrob's drinking system is engineered for reliability and efficiency. The non-deforming UPVC pipes and dual water lines guarantee sufficient water flow. The patented needle-clamp nipples are clog-resistant, and are made of anti-aging stainless steel and robust plastic. Integrated drip-catching cups prevent leakage from accidental contact by chickens, keeping the cage dry.

The water line is equipped with a pressure regulator and a water level alarm to ensure a consistent and sufficient supply of daily drinking water for the flock.

A specialized backflush device is also included. After administering medication through the water pipe, this device discharges the dirty water from the lines, and expells it outside the poultry house.



Feeding System

Farmrob's patented precise feeding system features a simple structure, uniform feeding, and user-

friendly operation. Both of the auger filling device and disc chain filling device are available to suit different farm layouts. In this system, even feed is distributed automatically to the troughs from the feed hoppers. The application of the patented feed leveler further enhances distribution consistency, ensuring an optimal supply at every access point. To minimize waste and labor, the system is equipped with an automatic residue collector. This device efficiently returns uneaten feed from the ends of the lines back into the main distribution process, reducing manual cleanup and maximizing feed utilization.



Product Usage

The layer rearing equipment creates comfortable and stress-free environments for layers, which contributes to higher egg yields and improved egg quality. Each cage is integrated with automated feeding and watering systems, providing chickens with continuous access to fresh feed and clean water. This system is suitable for a variety of applications, including: poultry farms, egg production facilities, large-scale commercial poultry operations.

Why Choose Us?

Farmrob has more than 20 years of poultry farming experience and mature system.

1. Top 1 layer equipment supplier and manufacturer in China
2. Customized construction and project design and engineering solutions
3. Reasonable and cost-effective quotation
4. Chicken-oriented and animal-friendly equipment
5. Advanced technical equipment with 25-year lifespan

6. Provide installation and technical guidance

7. Training for farmers on how to properly care for the birds and use and maintain the equipment



Sichuan Shengxing Intelligent Technology Group Co., Ltd.



+86 158 8207 1508



Johnzhu@farmrob.com



farmrob.com

19 1st Road ,YangAn Industrial Park, ChengDu City,China