

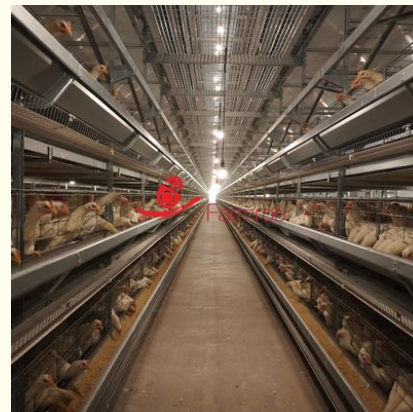


Advanced performance 9-Tier H Type Layer Chicken Cage System Maintenance-Free

Our Product Introduction

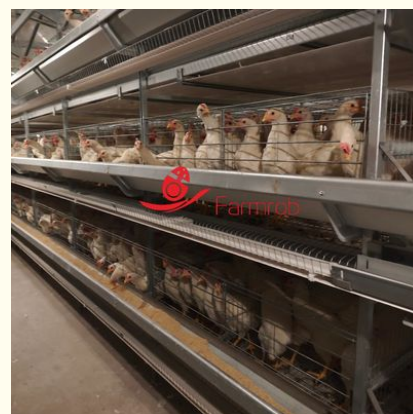
Basic Information

- Place of Origin: China
- Brand Name: Farmrob
- Certification: ISO9001
- Model Number: H Type
- Minimum Order Quantity: 200 sets
- Price: USD 65-200/set
- Packaging Details: Normal export packing 20ft / 40HQ container
- Delivery Time: 60days
- Payment Terms: L/C,T/T
- Supply Ability: 50000 sets per month



Product Specification

- Service Life: Over 15 Years
- Story Height: 700mm
- Cage Size: 1800mm*650mm*450
- Area/Bird(c): 434c
- Characteristics: Automatic Drinking System, Automatic Feeding System, Automatic Egg Collection, Automatic Manure Removal System
- Application: Laying Hen Farming Equipment
- Feature: Automatic Layer Chicken Cage



for more products please visit us on farmrob.com

Product Description

Advanced performance 9-Tier H Type Layer Chicken Cage System Maintenance-Free

As a long-standing provider of poultry farming solutions, Farmrob is specialized in engineering and delivering high-performance equipment and automated rearing systems to optimize modern poultry production and drive productivity. Whether adapting to extreme climates or infrastructure limitations, our solutions are precision-tailored for regional requirements worldwide. Farmrob's factory poultry rearing cages are made of Zn-Al-Mg alloy and selected accessories are anti-aging and non-deformable, which make them robust and durable.

Features

Automation and Precision Management

1.Intelligent Environment Control System

Real-time monitoring through temperature and humidity, ammonia, CO₂ sensors, which can help adjust the ventilation and temperature control equipment in time.

2.Precision Feeding System

Real-time detection of feeding data, accurate weighing of feed, filling and feeding equipment and supporting patented products to ensure that feed is evenly delivered to each chicken and reduce feed waste.

3.Intelligent Manure Cleaning System

Using conveyor belt automatic manure cleaning reduces the labor consumption, and directly conveys to the manure treatment plant to ensure clear air in the chicken house.

Resource Conservation

1.Cage Frame with long service life

Adopting aluminum magnesium zinc alloy instead of traditional galvanized layer, with great corrosion resistance, service life of at least 20 years, reduce damage.

2.Energy Saving

Patented nipple to reduce waste. Equipped with water cups to prevent water leakage from sweeping placement of the chickens' heads and tails. Precision feeding system equipped to avoid feed waste; Energy-saving LED, equipped with dimming system, not only reduces chicken stress, anal pecking and egg pecking, but also saves electricity.

3.Cost Control

9-layer three-dimensional design, increasing the amount of breeding per unit area; automation saves labor; intensive digital management, risk control, reduce mortality rate.

Chicken Security

1.Reasonable Cage Design

Proper cage mesh size ensures that the chicken will not get stuck and the feces will not remain to avoid contamination of eggs. The cage provides enough space to move around. Anti-scratch treatment: the welding points of the cage mesh are polished and smooth to avoid damage to the chickens' feathers or skin. High-strength frame, which can ensure that the equipment will not be deformed or collapsed.

2.Intelligent Equipment

Water level detector, feeding probe and other monitoring devices ensure to meet the daily needs of the chickens; Intelligent dimmer: simulate the natural light cycle to avoid sudden strong light leading to panic of the chickens; Precise environmental control. The temperature difference in the house is extremely small under the conditions of closedness, heat insulation and good heat preservation of the house. Ensure healthy and comfortable growth of chickens.

3.Alarm System

Environmental abnormal alarm: automatic alarm when temperature and humidity or ammonia carbon dioxide exceeds the standard. Workers can adjust the equipment in time to prevent chickens from asphyxiation or respiratory diseases. Manual emergency switch: manual mode can be switched when the automation fails to avoid system paralysis. Internet of Things: It can realize remote breeding data monitoring by cell phone, data modification by wired computer on site. The alarm system can always monitor the environmental problems by seamlessly connecting with the controller.



FAQ

1.Q: Are you a manufacturer?

A: Yes, we have been providing professional products in this field.

2.Q: Can you design the drawings of the chicken coop for my farm?

A: Yes, You need to provide us with the size of the farm and your design concept.

3.Q: How many days does it take to complete the sample? How about mass production?

A: Generally, if the goods are in stock, the samples will be sent immediately by air within 3-5 days.

Usually within 30 days or according to your order.

4.Q: How do you package the products?

A: Usually as export standard packaging or according to your requirements.



Sichuan Shengxing Intelligent Technology Group Co., Ltd.



+86 15882314158



dennis@farmrob.com



farmrob.com

19 1st Road ,YangAn Industrial Park, ChengDu City,China