



Firm And Sustainable Water Pressure Regulator Type V Poultry Accessories Double Outlet Design

Our Product Introduction

Basic Information

- Place of Origin: China
- Brand Name: Farmrob
- Certification: ISO9001
- Model Number: WPRV
- Minimum Order Quantity: 12 sets
- Packaging Details: In wooden cage packaging
- Delivery Time: 20 days
- Payment Terms: L/C, T/T
- Supply Ability: 50000 sets per month



Product Specification

- Type: Water Drinking Equipment
- Usage: Poultry Equipment
- Life Circle: 8-10Years
- Material: ABS Engineering Plastic
- MOQ: 12sets
- Specification: 610*460*410 Mm
- Weight: 15kg
- Highlight: **Firm Poultry Accessories,
Sustainable Poultry Accessories,
Double Outlet Poultry Accessories**

for more products please visit us on farmrob.com

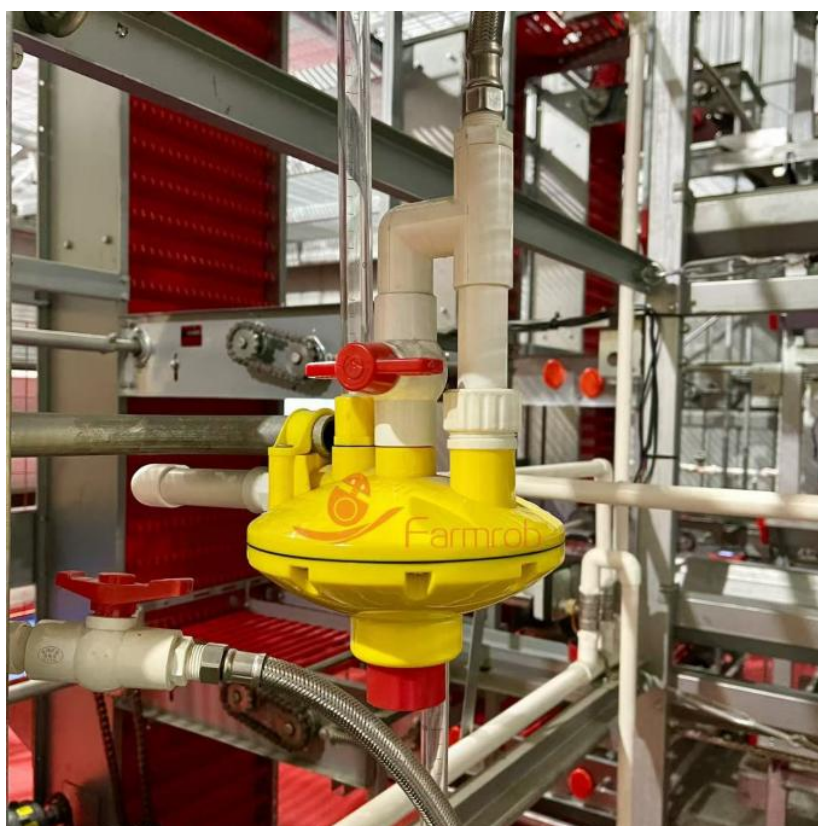
Product Description

Firm And Sustainable Water Pressure Regulator- Type V Poultry Accessories Double Outlet Design

Poultry Water Pressure Regulator Type V, an external backflush regulator specially designed for the front of the nipple drinking line, controls the water pressure between 0.1KP and 0.3KP. It guarantees that the nipple drinker will work better within this pressure range. Water leakage and injection caused by high water pressure will not happen, as well as lacking water caused by low water pressure. Type V regulator offers sufficient water volume with a large water inlet, which is an indispensable complement to the nipple drinker.

Features

- 1.The shell, made of ABS engineering plastic and pure raw material, is strong and durable.
- 2.Double outlet design supplies water to both sides, ensuring the water supply for 8 layers of chicken cages.
- 3.The regulator can be matched with 25 mm and 26 mm diameter round tubes and 22 mm diameter square fittings.
- 4.The screw-through design of upper and lower shell is easy to install and dismantle, and can be repeatedly disassembled and flushed.
- 5.The water pressure regulator is equipped with built-in backflush device. Just turn on the backflush switch, you can directly flush the water line with large current.
- 6.Equipped with a 60cm or 90cm transparent display tube. Inside it has a red float for easy observation of water level.



About Us

1.Independent Production

The company has nearly 100 precision lathes and over 50 injection molding machines, as well as a Type V Regulator automated assembly line.

2. Professional Technology

We have an R&D and design team of over 30 people who visit over 100 chicken farms each year to collect information on the use of Type V Regulators. They are continuously dedicated to improving our products and satisfying our customers' needs.

3. Quality Assurance

Strictly in accordance with the requirements of the quality system. Each Type V Regulator is tested on the water test bench. Under the pressure of 0.3Pa, the water pressure can be adjusted sensitively to the formulated pressure. The products that do not drip for 1 minute can be judged as qualified.

4. After-sales Service

The company has 2 professional installation service teams to provide customers with installation and maintenance services. There are detailed installation manuals and video materials, which can guide customers to install by themselves. The company is also equipped with a 24-hour service hotline to answer various problems encountered by customers.

5. Package and Shipment

Every 2 Type V Regulators are packed in a small package and 12 in a large package. Professional packaging is firm.

6. Foreign Trade Business Services

According to customer demands, we can provide various port services and can present the certificate of origin.



Sichuan Shengxing Intelligent Technology Group Co., Ltd.



+86 158 8207 1508



Johnzhu@farmrob.com



farmrob.com

19 1st Road ,YangAn Industrial Park, ChengDu City,China